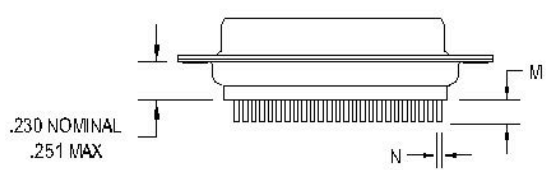
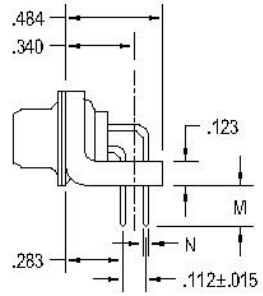


CONTACT STYLE	APPLICABLE BOARD THICKNESS	M ±.027	N +.003
STRAIGHT	.094	.158	.030
STRAIGHT	.125	.183	.030
STRAIGHT	.094	.158	.040
STRAIGHT	.125	.183	.040
90° ANGLE	.062	.127	.030
90° ANGLE	.094	.158	.030
90° ANGLE	.125	.183	.030
90° ANGLE	.062	.127	.040
90° ANGLE	.094	.158	.040
90° ANGLE	.125	.183	.040



P.C.B. MOUNT - STRAIGHT CONTACTS



P.C.B. MOUNT - RIGHT ANGLE

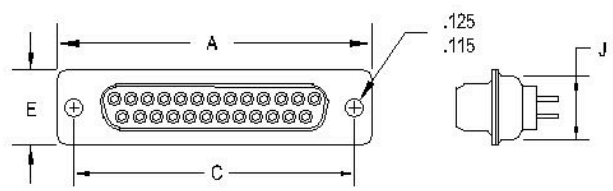
MATERIAL:

- 1 STEEL SHELLS: ZINC OR CADMIUM PLATED QQ-P-416 TYPE II CLASS 2
- 2 CONTACT FINISH: OVERALL GOLD PLATED 50 MICRONS OVER NICKEL MIL-G-45204
- 3 CONTACTS: SIZE 20, MACHINED COPPER
- 4 INSULATOR: THERMOPLASTIC MIL-M-24519 GPT-30F MS18276-1 ARRANGEMENT
- 5 PERFORMANCE TESTED TO MIL-DTL-24308E REQUIREMENTS
- 6 SPACERS SUPPLIED WITH P.C.B. MOUNTED CONNECTORS - SHIPPED BULK

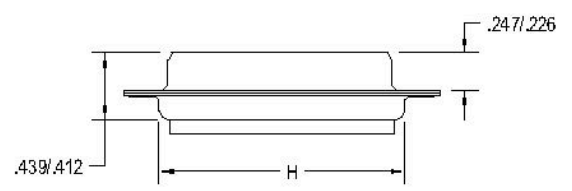
SPECIFICATIONS:

- TEMPERATURE RATING: +125 °C TO -55 °C
- INSULATION RESISTANCE: 5,000 MEGOHMS MINIMUM
- DIELECTRIC WITHSTANDING VOLTAGE AT SEA LEVEL: 1,000 VOLTS

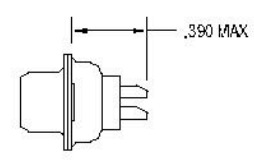
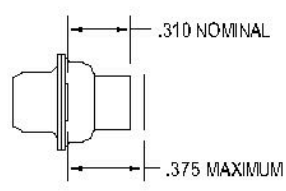
SIZE	NUMBER CONTACTS	A ±.015	C ±.005	E ±.015	H ±.010	J ±.010
1	9	1.213	.984	.494	.759	.422
2	15	1.541	1.312	.494	1.083	.422
3	25	2.088	1.852	.494	1.625	.422
4	37	2.729	2.500	.494	2.272	.422
5	50	2.635	2.406	.605	2.178	.534



CRIMP CONTACTS



SOLDER CUP TAIL



		CODE IDENT NO 60430		APPROVALS	DATE	ADI ELECTRONICS, INC.
		NOTES:		DRAWN BY J. WHITT	08/01/02	
		UNLESS OTHERWISE SPECIFIED DIMENSIONS ARE IN INCHES		CHECKED BY		TITLE CATALOG DATA SHEET
- INITIAL RELEASE		08/02/02	J.W.			PART # TECH-PUB-001
REV	DESCRIPTION	DATE	APPROVED			SCALE NONE SHEET 1 OF 3 REV -

REVISIONS